

Pathology in the Netherlands

Siebe Wouda

NL Venlo

pathologists

- Employed relationship normal stable earnings, fixed working time of +- 40h/week
- Free professional higher but flexible earnings, longer flexible working times

		FEE PATHOLOGIST	CHARGE PATHOLOGY
HISTOLOGY	050501	28,20	63,20
CYTODIAGNOSTIC EXAMINATION NON-CERVICAL	050502	11,30	30,10
IMMUNO STAININGS	050503	56,40	237,70
ELECTONMICROSCOPY	050505	84,60	87,20
FNA	050506	18,80	35,80
MORPHOMETRICS	050507	56,40	142,40
AUTOPSY	050508	282,50	290,50
CYTODIAGNOSTIC EXAMINATION - CERVICAL	050509	7,10	23,90
FLOW-CYTOMETRIC EXAMINATION	050510	56,40	253,20

Disadvantages COTG system

- No correlation between workload and reward
- Performing more (unnecessary) immunotechniques is rewarded
- No clear rules for splicing specimens, splicing is rewarded

DBC

Diagnose behandel combinatie

Diagnose treatment combination

DOT

Dbc On his way to Tranparency

DOT

Treatment with clear costs, all-in. Laboratory charges were left, and became free negotiable, better comparing between hospitals/labo's

Basics new financial rate system

- the combination of the type of tissue, material, and the way the clinician obtained this material. For example: colon- biopsy or colon-resection
- amount of slides and stainings
- complexity of the clinical question
- number of samples obtained during the clinical procedure (fixed and clear splicing)

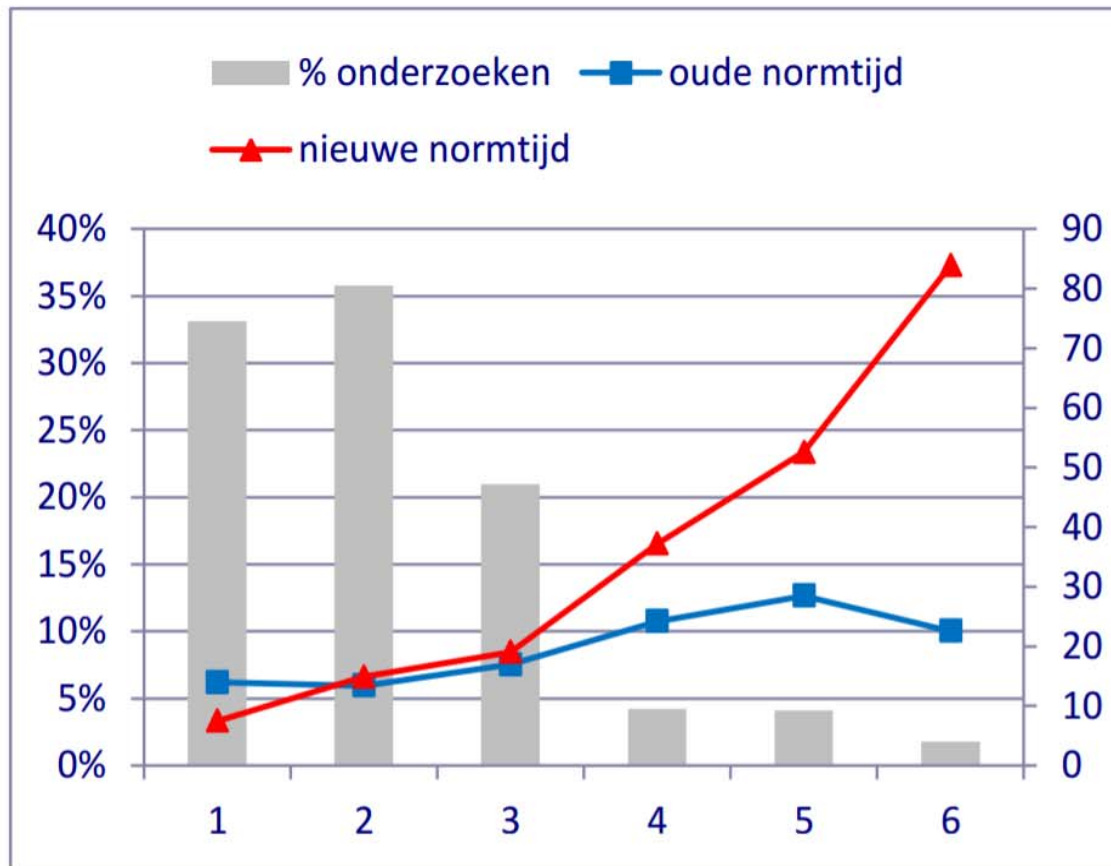
Advantages

- fair, money for workload
- no perverted stimulus to perform more immunotechniques
 - in principle, no splicing of specimens

Cat 1	7,5 min	simple skin biopsies (BCC, neoplasia) nasal polyps, galbladder. Urine, liquor
Cat 2	15 min	most biopsies cervix, larynx, vagina, g.i., endometrium skinresections. Indicative cervixcytologie, nipple fluid.
Cat 3	20 min	Most needle biopsies: mamma, lung, mediastinum, pancreas, peritoneum, ovarium, thyroid. Skin biopsies non neoplastic. FNA solid organs/tumors. Pleural fluid, ascites
Cat 4	38 min	simple resections f.e. thyroid en more difficult biopsies f.e. lymphnode and prostate. EBUS/EUS whole procedure
Cat 5	54 min	simple resections f.e. thyroid en more difficult biopsies f.e. lymphnode and prostate. EBUS/EUS whole procedure
Cat 6	86 min	Large oncological resections including colon resections
*cat 4		Consult, frozen sections

Financial separate extra costs:

- Frozen section
- FNA
- Molecular techniques



Figuur 1:

Uitgezet zijn de aantallen verrichtingen per zwaartecategorie, uitgedrukt in percentage van het totale aantal verrichtingen (grijze balken). De rode lijn is de **nieuwe** berekende normtijd per verrichting per zwaartecategorie. De blauwe lijn is de gemiddelde oude normtijd per nieuwe zwaartecategorie zoals deze op de **oude** manier berekend zou worden.

Tabel 1: per categorie uitgezet oude en nieuwe normtijd in minuten.

categorie	% onderzoeken	oude normtijd	nieuwe normtijd	% normtijd nieuw
1	33%	13,9	7,5	15%
2	36%	13,4	15	31%
3	21%	17,0	19	23%
4	4%	24,2	37	9%
5	4%	28,5	53	13%
6	2%	22,6	84	9%

Type organisatie

Impact normtijd

Vrijgevestigd

2%

Vrijgevestigd

-1%

Vrijgevestigd

0%

Loondienst

3%

Loondienst

5%

Loondienst

11%

*Academisch**34%**Academisch**33%*

www.pathology.nl